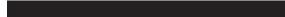


Gelbach Designs, Inc.

2405 Dunavant Street
Charlotte, North Carolina 28203
Tel: 704.339.0785 Fax: 704.339.0545

This drawing and all prints of it are the property of Gelbach Designs, Inc. Prints are to be returned to Gelbach Designs, Inc. upon completion of use for which they were issued. Reproduction of this drawing without the written consent of Gelbach Designs, Inc is not permitted.



Nigeria News Set



Entire perspective view

DATE **02.25.08** SHEET
SCALE **N/A**
DRAWN **BR**
PROJ. NO.





Gelbach Designs, Inc.

2405 Dunavant Street
Charlotte, North Carolina 28203
Tel: 704.339.0785 Fax: 704.339.0545

This drawing and all prints of it are the property of Gelbach Designs, Inc. Prints are to be returned to Gelbach Designs, Inc. upon completion of use for which they were issued. Reproduction of this drawing without the written consent of Gelbach Designs, Inc is not permitted.



Nigeria News Set

Lifestyle side of set. Comfortable seating, monitor, duotoned carpeting on 16" riser, Cherry wood panels, printed warm color backdrops, and translucent p95 or equivalent at top of frames, backlit.

DATE **02.25.08** SHEET
SCALE **N/A**
DRAWN **BR**
PROJ. NO.



Projecting area. Printed blue and pale orange backdrops, I-beams, projection screen in center.



Gelbach Designs, Inc.

2405 Dunavant Street
Charlotte, North Carolina 28203
Tel: 704.339.0785 Fax: 704.339.0545

This drawing and all prints of it are the property of Gelbach Designs, Inc. Prints are to be returned to Gelbach Designs, Inc. upon completion of use for which they were issued. Reproduction of this drawing without the written consent of Gelbach Designs, Inc is not permitted.

Nigeria News Set

DATE **02.25.08** SHEET
SCALE **N/A**
DRAWN **BR**
PROJ. NO.



Gelbach Designs, Inc.

2405 Dunavant Street
Charlotte, North Carolina 28203
Tel: 704.339.0785 Fax: 704.339.0545

This drawing and all prints of it are the property of Gelbach Designs, Inc. Prints are to be returned to Gelbach Designs, Inc. upon completion of use for which they were issued. Reproduction of this drawing without the written consent of Gelbach Designs, Inc is not permitted.

Nigeria News Set

News desk side of set. Backlit milk plexi bubbles on left, p95 or equivalent in center. Blue printed backdrops, red anodized aluminum finish or equivalent on right. Faux-brick finish across base of walls.

DATE **02.25.08** SHEET
SCALE **N/A**
DRAWN **BR**
PROJ. NO.



Gelbach Designs, Inc.

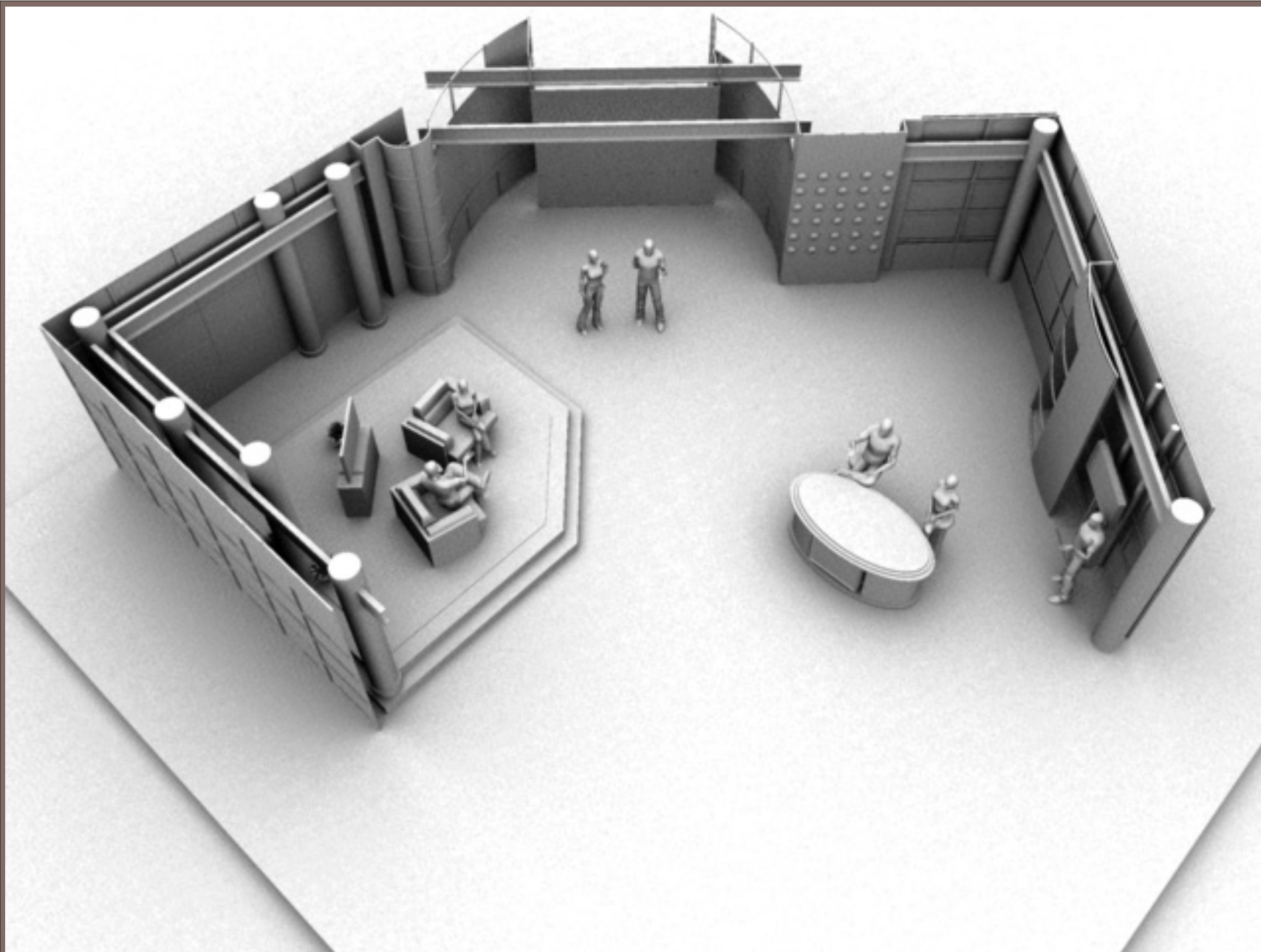
2405 Dunavant Street
Charlotte, North Carolina 28203
Tel: 704.339.0785 Fax: 704.339.0545

This drawing and all prints of it are the property of Gelbach Designs, Inc. Prints are to be returned to Gelbach Designs, Inc. upon completion of use for which they were issued. Reproduction of this drawing without the written consent of Gelbach Designs, Inc is not permitted.

Nigeria News Set

Standing presenter position. Red anodized aluminum or equivalent. Powdercoated steel frames visible. Monitor in over-shoulder position. Faux brick at base of walls.

DATE **02.25.08** SHEET
SCALE **N/A**
DRAWN **BR**
PROJ. NO.



entire set perspective.



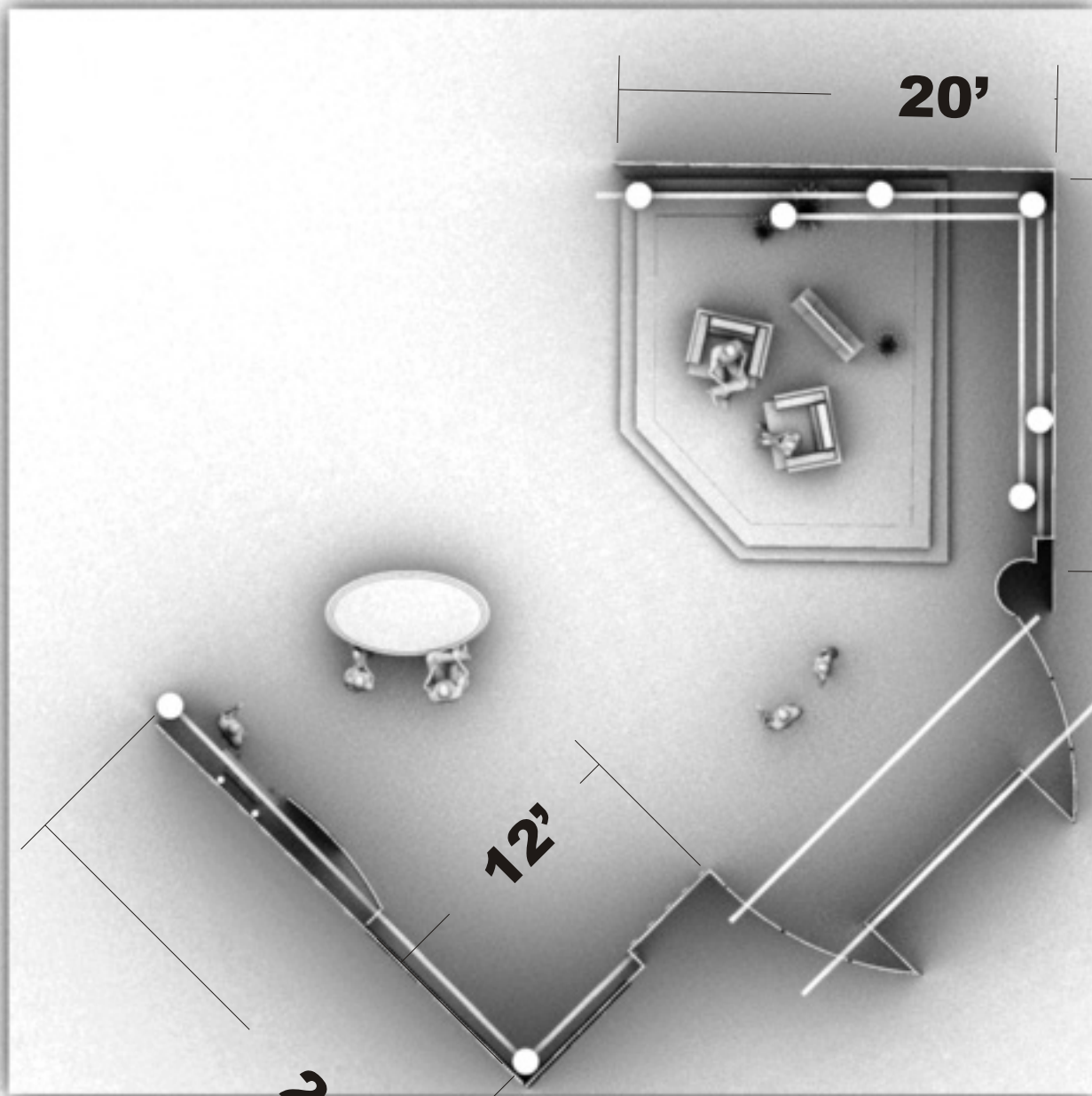
Gelbach Designs, Inc.

2405 Dunavant Street
Charlotte, North Carolina 28203
Tel: 704.339.0785 Fax: 704.339.0545

This drawing and all prints of it are the property of Gelbach Designs, Inc. Prints are to be returned to Gelbach Designs, Inc. upon completion of use for which they were issued. Reproduction of this drawing without the written consent of Gelbach Designs, Inc is not permitted.

Nigeria News Set

DATE **02.25.08** SHEET
SCALE **N/A**
DRAWN **BR**
PROJ. NO.



Entire perspective frontal view



Gelbach Designs, Inc.

2405 Dunavant Street
 Charlotte, North Carolina 28203
 Tel: 704.339.0785 Fax: 704.339.0545

This drawing and all prints of it are the property of Gelbach Designs, Inc. Prints are to be returned to Gelbach Designs, Inc. upon completion of use for which they were issued. Reproduction of this drawing without the written consent of Gelbach Designs, Inc is not permitted.

Nigeria News Set

DATE **02.25.08** SHEET
 SCALE **N/A**
 DRAWN **BR**
 PROJ. NO.